

A pregnant woman wearing a blue dress and gold jewelry is holding a single yellow leaf. The background is a soft, warm glow.

PLACENTA DONATION  
INFORMATION KIT

404.315.6500

The logo for Tissue Resources, featuring a circular arrangement of colored dots in shades of blue, purple, and green.

**Tissue Resources**  
Donor Tissue Recovery Services

[WWW.TISSUERESOURCES.COM](http://WWW.TISSUERESOURCES.COM)



A pregnant woman with her hair in a ponytail, wearing a black and white striped t-shirt and dark leggings, sits on a wooden fence. She is smiling and looking down at a young child. The child, wearing a yellow hoodie and a white baseball cap, sits on the fence next to the woman. A large, dark-colored dog is sitting on the ground in front of them, looking up at the child. The background shows a white wooden fence and trees in a park-like setting. The scene is bathed in warm, golden light, suggesting late afternoon or early morning.

*Your Gift Can  
Make A Difference*





# Thank You For Your Interest

This free information kit provides you with everything you need to know to donate your placenta with Tissue Resources. While most placentas are discarded as medical waste after birth, the gifting of your placenta can change the lives of numerous families.



## Contents:

- Who Can Donate
- Why Donate Your Placenta
- Placenta Tissue Products
- The Donation Process
- FAQs
- History & Mission



○ ○ ○ ○ ○

# Who Can Donate?

**A**ny eligible expectant mother with a planned Caesarean section delivery can donate. There are no age limits. Some medical conditions may disqualify you for donating. Contact a Client Services Specialist to see if you are eligible.




○ ○ ○ ○ ○

# Why Donate Your Placenta?

The placenta is one remarkable organ. It is the only organ that is shared by both mother and baby. Unfortunately, most placentas are being discarded as medical waste. Your donated placenta has the potential to help over 50 families in need!

The amniotic membrane, which comprises the innermost layer of the placenta, is used to develop products that promote healing. The amniotic membrane is being used for a wide range of procedures including eye, oral, spine surgery, and for the treatment of difficult-to-heal wounds such as diabetic foot ulcers, venous leg ulcers, pressure ulcers (bed sores), and burns.



*Did You Know  
That Your Placenta Can  
Heal Over 50  
Patients And Families  
In Need?*





# The Donation Process

The donation process poses no risk to either you or your baby, and there is absolutely no cost to you or your family for the donation.

Please consider this charitable donation so that together, we can improve the quality of life for patients in need.

1



Speak with your doctor about your decision to donate your placenta through Tissue Resources.

2



Sign a written consent giving Tissue Resources permission to recover your placenta.

3



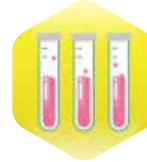
You complete simple and confidential FDA-required medical and social history information and paperwork.

4



A collection kit will be shipped to you, your health care profession, or the delivering hospital. Our collection kit contains everything needed to donate.

5



When you arrive at the hospital, a sample of your blood will be taken at the same time your routine hospital blood work is drawn. No additional needle stick is required.

6



After you deliver, your health care providers will recover and prepare the placenta for transport.

7



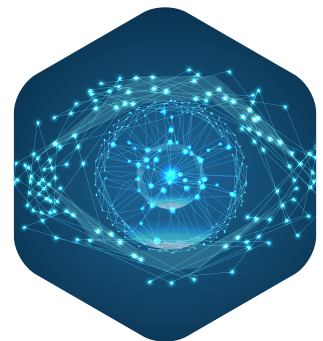
Call the designated courier to schedule a pick up.



# Placenta Tissue Products



- Ophthalmic Application
- Dental Application
- Sports Injuries
- Wound Care
- Spinal Surgeries





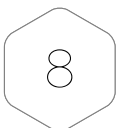
## Our History

**T**issue Resources is a subsidiary of AlphaCord, a leader in newborn stem cell banking, who has been helping families since 2002. Tissue Resources was created to meet the increasing demand for placenta tissue needed for research and therapeutic uses.



## Our Mission

**W**e are driven by our desire to be a compassionate and responsible community member through our partnerships with non-profit organizations whose sole focus is on the advancement of biotech products which enhance the lives of our fellow citizens.







# FAQs

## Can Any Expectant Mother Donate?

Any birth mother may be able to donate. You must not have certain medical conditions and you must be clear of certain infectious diseases. Although vaginal births may be eligible for donation, scheduled C-section deliveries are preferred. C-section deliveries pose less risk of contamination and less likelihood of tissue damage during birth.

## Are There Any Costs Associated With Donating?

No. The cost of the collection kit and incurred shipping charges are covered by Tissue Resources.

## Is The Donation Process Safe?

Yes. There is no risk to you or your newborn. Your birth tissue is recovered after the C-section once your baby is safe and out of the way. Instead of being discarded as medical waste, your gift will be recovered and used to treat those in need.

## Why Are Blood Tests Required?

The FDA requires that a blood test be completed for each placenta donor. This helps ensure the safety and well-being of the recipient and the technicians that will handle it. When done alongside your regularly required hospital blood draw, ours should not require an additional needle stick.

## Will I Receive Any Updates On The Person Who Receives My Donated Placenta?

We are unable to disclose this information due to the same patient confidentiality standards we have when you become a donor as protected by HIPAA laws.

## Will I Be Paid Or Compensated For My Donation?

Federal Laws prohibits the compensation for the donation of organs. Yet your gift is truly appreciated by those who will receive it.

## Can I Privately Store Or Donate Cord Blood While Donating My Placenta?

Yes, it is possible to donate or collect for cord blood for storage (private banking) through another organization, such as AlphaCord, without affecting your placenta donation.



# Tissue Resources

Donor Tissue Recovery Services



*We Are Here To Help*



**404.315.6500**



**[contact@TissueResources.com](mailto:contact@TissueResources.com)**



**[www.TissueResources.com](http://www.TissueResources.com)**



**1777 Northeast Expressway NE,  
Suite 180  
Atlanta, Georgia 30329**



*Connect With Us*



**[Facebook.com/tissueresources](https://Facebook.com/tissueresources)**



**[Twitter.com/tissueresources](https://Twitter.com/tissueresources)**



**[Instagram.com/tissueresources](https://Instagram.com/tissueresources)**